

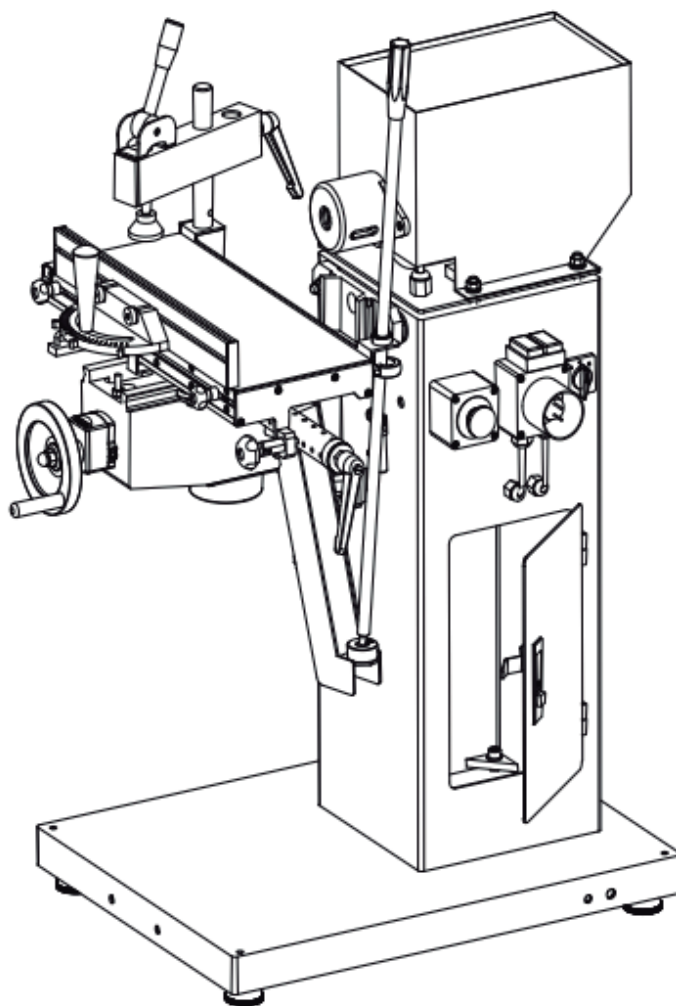


MAKSIWA®

FH.16.C

Mortiser

INSTRUCTION MANUAL



Attention: Read this manual before using the machine.

Greetings,

Congratulations, you just purchased the FH.16.C – Maksiwa Mortising Machine, which was developed with the Maksiwa's highest standards of technology and quality. Your Mortising Machine allows you to have the highest productivity in woodworking. It should be noted that to use this machine with maximum efficiency, you should read and understand the instructions in this manual. Visit our website to know about our launches and other product lines: www.maksiwa.com/usa

1. Safety Regulations	4
1.1 Workspace	4
1.2 Electrical Safety.....	4
1.3 Personal Safety	4
1.4 Machine Safety.....	6
2. Specifications.....	7
3. Installation.....	7
3.1 Working Conditions	7
3.2 Transport and Stocking.....	7
3.3 Manipulation with the Machine	8
4. Safety Instructions.....	8
4.1 Machine Safety.....	9
5. The Power Supply	9
5.1 Switch.....	10
6. Operation and Adjustment	10
6.1 Machine Intention.....	10
6.2 Description of the Machine.....	10
6.3 Making a mortise hole	10
6.4 Working area.....	10
6.5 Safety instruments	11
6.6 Workers qualification	11
7. Tools	11
7.7 Process of clamping	11
8. Maintenance.....	11
9. Cleaning and Lubricating.....	11
10. Faults, Remedy.....	12
11. Spare Parts.....	12
12. Certificate (to technical data)	12
13. Electric Diagram.....	13
14. Parts List and Exploded Diagram	14
15. Terms of Warranty	21

1 Safety Regulations

Read all instructions in this manual. Failure to follow all instructions listed below may result in personal injury and equipment damage. **WARNING:** When using electrical equipment, always follow the safety precautions to reduce risk of fire, electric shock and personal injury. The manufacturer declares that they are not liable for damages to person(s) or object(s) which may be caused by failure to comply with the safety regulations.

1.1 Workspace

- Keep the work surface clean. Disorganized surfaces and areas are an invitation, for accidents in the work place.
- Do not use the saw in hazardous environments. Do not use the machine in places that are damp, wet, exposed to rain, or in the presence of flammable liquids or gases. Keep your work area well lit.
- Visitors must be kept at a safe distance from the workspace. Take the appropriate precaution by using padlocks or following the appropriate lock-out-tag procedures.

1.2 Electrical Safety

- Ensure that your power supply is in accordance with the rating of the machine. A 10% increase or decrease in voltage will cause power loss and overheating. All Maksiwa equipment is factory tested. If this Machine does not operate properly, first check the power supply.
- **CAUTION: WHEN SERVICING OR REPAIRING THE MACHINE, ONLY USE OEM PARTS.**
- The plug used for the machine must be rated for the correct voltage/Amps and compatible with the electrical outlet. Never modify the plug.
- Do not use any adapter plugs. Using the correct plug (without modifications) with the correct outlet will reduce the risk of electrical shock.

1.3 Personal Safety

- Stay alert, pay attention at what you are doing and use common sense when operating the machine. Do not use the machine when you are tired or under the influence of drugs, alcohol, or medication. If distracted, while operating the machine, it may in result in serious personal injury.



ALWAYS USE PROPER PROTECTION WHEN OPERATING THIS EQUIPMENT.

- Always wear safety glasses, face protection, safety anti-slip shoes, and ear protection to reduce personal injury.
- Always wear safety glasses, face protection, safety anti-slip shoes, and ear protection to reduce personal injury.
- Do not wear loose clothing, gloves, chains, rings, bracelets or other accessories. It is also recommended to use hair protection.
- Do not over stretch to reach. Keep balanced and feet firmly planted at all times.
- Disconnect the machine from the power supply before servicing or performing repairs.
- Reduce the risk of unintended starts by making sure that the main power switch is turned off before plugging the cord into the outlet.
- Use recommended accessories. Refer to the instruction manual to check the recommended accessories. Improper use of the accessories may cause personal injury.
- Never stand on the machine. serious accidents can occur if the machine is tilted.
- Your safety is your responsibility. Serious risks are involved when working with machinery.
- Always focus on the job, do not operate machine when tired.
- Never use in dangerous environment such as in damp, wet location, or expose under the rain.
- Never leave machine running without attention.
- Never open the protection cover while the machine is still running.
- The machine operator must not be younger than the minimum age established by legislation and must also be fully qualified to work with this machine.
- Many accidents are caused by appropriate clothing and personal objects (i.e. bracelets, watches, necklaces etc.). Make sure that buttons are securely fastened.
- Do not wear ties and tie back long hair.
- Wear approved footwear and safety glasses for your eyes at all time.
- The machine and working area around it must always be kept clean, keep well lighted and ventilation.
- The use of safety devices is obligatory and must never be removed, modified or damaged. The manufacturer declines all responsibility if safety devices are modified in any way.
- In exceptional working conditions the safety devices provided with the machine may be insufficient. It is your responsibility to make and fit the necessary additional safety devices.
- All work on electrical components must be carried out by a qualified electrician.
- All maintenance work must be carried out with the machine switched off, padlocked, the compressed air tube disconnected from the fast Snap-on fitting.
- Use only cutting tools in good condition. In any case avoid using a hammer. Screws, nuts and bolts must be tightened with a proportional strength, neither too slack nor too tight. Use only the tools given just as they are without altering their strength.

1.4 Machine Safety

- Turn off the machine, unplug the power cord, and wait until the working process stops, before performing any maintenance or adjustments to the machine.
- Do not put your hand into the machine while it is running
- Do not carry out quality checks while the machine is running.
- Do not put your hands into the machine while it is running, reach behind cladding or into places obscure from view.
- Do not reach the drill unit operating area while production is in progress. Suitable aids must be used to push small parts against stops. Risk of getting crushed!
- Processing forces Adapt Material feed and cutting volume to the retention force for the material concerned.
- If the retention problems are encountered, use additional stops, templates or power-operated clamping devices.
- Fire Hazard! Only perform grinding and welding work when the machine is clean.
- The machine is not explosion protected. do not set it up in the vicinity of painting shops.
- Do not overload the Machine, it will perform the job better and safer if used as indicated.
- Do not force the machine by performing a job for which it was not intended for.
- Inspect the machine. Keep it in a clean and neat condition for optimal performance.
- Follow the instructions on lubricating and changing accessories.
- Check the alignment of moving parts and for any damaged parts, before continuing to use the machine. A part that is damaged should be carefully examined to determine, if it is functioning properly and if it will affect the machines.
- Do not use the machine if any the switches do not work properly.
- Never leave the machine running unattended.
- Turn off the main power switch when not in use to prevent any accidents.
- Protect the power supply circuit with at least a fuse or circuit breaker. Do not attempt to operate the machine at any voltage other than the designated voltage.
- Do not use abrasives. Excessive heat generated by abrasive particles will damage the components.
- Do not move the workpiece or open the cover until the initiated job has stopped.
- ATTENTION: Any powder created by sanding, cutting, grinding, drilling, and other activities contains chemicals that can cause cancer, birth and other reproductive harm. Some examples of these products are: in lead; crystal silica brick, cement and other masonry products; and arsenic and chromium from chemically treated wood.
- CAUTION: Do not connect the machine to the power outlet until this manual is read and understood
- Never perform operations hands-free. Think, "How can I avoid accidents?"
- Always wear safety goggles. Turn off the power and wait for the machine to stop and cool before starting to service or making adjustments.

2 Specifications

These service instructions contain, except general information about mortising machine, also a list of the equipment, delivered on request.

Slot Mortising Machine	
Motor power	2,2 kW
Mortor speeds	2850/min.
Max. tool diameter	Ø 16 mm
Max. height of mortising above the table	140 mm
Max. longitudinal travel of the table	309mm
Max. cross travel of the table	150mm
Machine Dimension	
Length	740 mm
Width	560 mm
Height	1320 mm
Table size	500x207 mm
Net weight	108 kg
Other Parameters	
Voltage / frequency	230V 50Hz 1PH / 400V 50Hz 3 PH
Noise level without technology LAeq	85,0 dB(A)
Noise level with technology LAeq	87,0 dB(A)

3 Installation

3.1 Working Conditions

Machine must operate in workshop surroundings within temperature range 41°F to 104°F (5°C to 40°C), relative air humidity 30% - 90% non condensing and altitude 1000 m above the sea in, surrounding classified: fire danger of combusitive dusts (BE2N2).

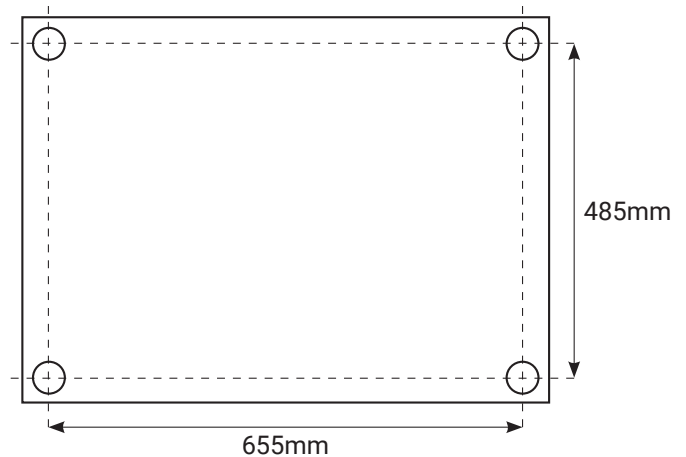
The machine does not pollute or negatively influence the environment.

3.2 Transport and Stocking

Vibrations and excessive humidity. The machine can be stocked under roof at temperature range between -13°F and +131°F (-25°C and +55°C).

3.3 Manipulation with the Machine

To facilitate the transport, the machine is delivered in a wooden crating completely assembled. When handling with the machine, use the certified lifting equipment and safe instruments. The best handling can be done with a transport pallet and a self propelling lift truck. For lifting you can use the steel wire rope SEAL of a min. diameter 5 mm. Before you switch on the machine, remove protecting film by using kerosene.



4 Safety Instructions

Failure to follow the safety instructions may cause serious injury for you and other persons.

1. This machine is designed in a way to ensure maximum safety over the optimal loading.
This safety depends on yourself above all.
2. When using any type of woodworking machine it is necessary to keep in mind all dangers that can happen.
3. Proceed with maximum caution when preparing any operation.
4. Read the operation instructions carefully before switching on the machine.
5. Set up all safety component units into an active position and check its function before you start the work. If the standard safety appliance is not sufficient for some special work, you will have to produce the special safety instrument.
6. Switch off the machine completely before you start cleaning and removing of the safety components units.
7. Make sure that the metal cover of electromotors is connected to a cupreous cable which is designed for this purpose, and that the good grounding is ensured.
8. Switch over to zero (according to picture) when you want to switch off the machine for the purpose of adjustment or the removal of some part of the machine.
9. The important condition for safety is the general cleanliness of the machine, work table and the floor. The important directions for the maintenance are stated in chapter No. 6 and 7.
10. The experience shows that many injuries are often caused by the personal things (ringlets, strap watches, wristbands). Therefore, remove all of those before you start to work, secure your sleeves, remove any ties or scarves that might get caught by various parts of the operating machine. Cover or restrain your hair so that it would not float around and wear suitable shoes as recommended or prescribed in safety instructions, valid in your country.
11. Always use goggles or another eye protection.

12. Do not work with a too big or too small workpiece which could cause overloading of the machine.
13. Do not use cracked or deformed tools.
14. Do not use tools at a higher speed than recommended by the manufacturer.
15. Make sure that all rotating tools are perfectly balanced, sharpened, adjusted and chucked.
16. Make sure that the fitting areas on both sides are clean, unbroken and perfectly plane before chucking the tool to the spindle.
17. Do not switch on the machine before all safety component units of tools, belts, chains are in an active position.
18. Fix screws, pins or connectors in fix according to setting down freezing without
19. Exceeding of commonly used measures and above all without using levers or beating.

It is forbidden to process other material than wood on the machine!

4.1 Machine Safety

Whenever you want to provide maintenance or adjustment of the machine, do not forget to switch off the main switch and lock it up! Before any repair, switch the machine off and wait until it stops. It is necessary to exchange damaged cables and plugs immediately. Do not switch on the machine without active safety components! Damaged safety equipment has to be exchanged immediately. People younger than 16 years are not allowed to work with the combined machine.

5 The Power Supply

Connection of the machine to the electric network can be done only by a specialist with electrotechnical qualification. Before you start with connecting - make sure that there is no voltage in the supply lead. Connect the protective conductor (yellow-green) to the clamp PE and the central conductor (pale blue) to the clamp N, if it is required. Cross-sections of the phase conductors and that of the protective conductor have to be conformable with the legal standards. A competent specialist has to exchange the defective electrical line at once. Operation of machine with damaged supply cables is very dangerous and therefore it is forbidden. Operating at the machine is forbidden for youngsters. Make sure that the voltage and the frequency mentioned in the type card of the motor agrees with the value of the used network. A five-ply cable with a socket CEE 16 amp. and the plug CEE 16 amp. are used for the power supply. The socket for the power supply of the machine has to be grounded (or neutralized) according to the instructions and ensured by at least 16 ampere fuse or the L-type safety-fuse.



WARNING!

Disconnect the line connector from network by the main switch before adjusting or exchanging the mortising drill and before maintenance or repair. It is possible to change the rotation direction by exchanging (switch-over) the wires (black and/ or brown) for three phase motors.



ATTENTION!

Avoid of exchanging the yellow-green wire with the phase! Entirely a qualified electrician is allowed to plug it in. The protection against the dangerous contact of inanimate parts is carried out by a selfacting disconnection from the supply, according to the article 6.3.1 of the norm EN 60 204-1.

5.1 Switch

The switch cannot be turned on until the machine is connected to network. The switch is turned off automatically by way of neutral protection with outage, it means that it is necessary to switch on the machine again after restoring of the current. If the motor is overloaded, the inbuilt safety fuse of the motor will switch off the machine. If the machine is switched off frequently in a sequence (twice or threefold), check up the machine (motor functions, tool sharpness etc.). A socket with a plug serves as the main switch.

6 Operation and Adjustment

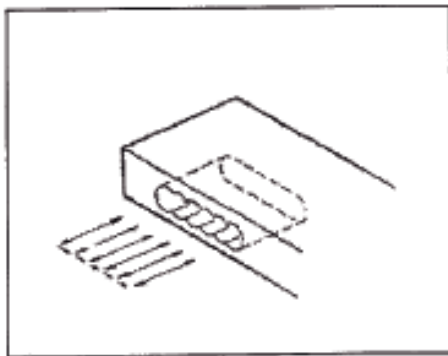
6.1 Machine intention

The machine is intended to drilling and mortising works in a small-series production, eventually to works of maintenance purpose or that of technical education.

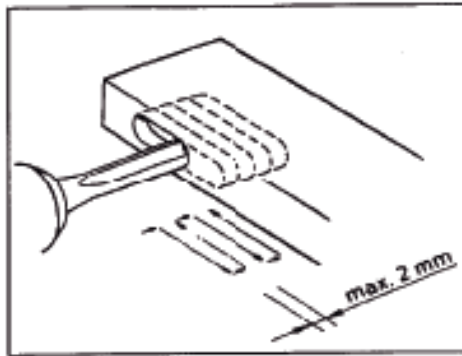
6.2 Description of the machine

Main parts of mortiser, i. e. table, support and console of lifting are made of iron casting. Horizontal and vertical movement of mortising table is operated by a hand wheel placed on the front side of mortiser. The processed workpiece is clamped by an eccentric fixture on the adjustable arm. The mortising tool is clamped into a special chuck, which is screwed at the end of the motor spindle.

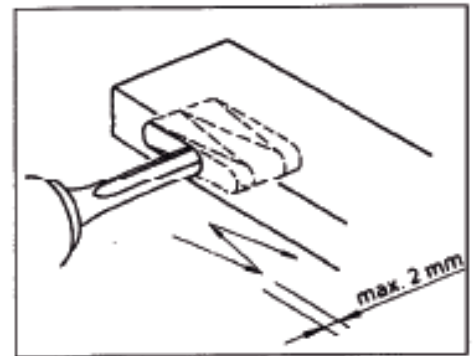
6.3 Making a mortise hole



First way



Second way



Third way

6.4 Working area

The working place of the machine is situated at the side from which the mortising drill table is operated.

6.5 Safety instruments

When working with the mortiser, you have to wear short strengthened apron and safety goggles. It is suitable to use adequate protection of hearing and recommended working footwear. It is forbidden to use any working mantle.

6.6 Workers qualification

Only an authorized worker, specialized in woodworking branch (or worker instructed by this specialist) is allowed to work with machine. The operator is liable to abide with all safety instructions and regulations, valid in the country in question.

7 Tools

For this accessory there are suitable: mortising bits (left and right) and countersinking bits with cylindrical shank from materials HSS. Used chuck enables clamping of tools with shank diameter from 1 mm to 16 mm.

7.1 Process of clamping - tool WESTCOT

Loosen the hexagonal screw by spanner from accessory and open jaws on required dimension according to the dimension of the tool. Insert the tool and tighten the jaws by rotating with hexagonal screw. Take care so as the tool would be clamped and sharpened well. You will increase the safety of operating and the quality of processed surface.

8 Maintenance

The accessory has a very simple construction and does not require a special maintenance.

9 Cleaning and Lubricating

It is necessary to switch off the machine and wait until it stops - before beginning with cleaning or oiling.

- The machine requires only a minimal maintenance. We recommend to protect it from humidity. Wipe at times all accessible beddings and worms with an oiled cloth. Leading screw of the height adjusting requires to be cleaned with kerosene regularly. Wipe the spindle and its bedding firmly with suitable oil.
- Clean regularly cooling ribs of the electric motor once a week because otherwise an effective cooling could not work.
- It is needed to clean the machine regularly, to grease bars, hinges, windings and other parts liable to rust with available oil. The interval of this activity depends on the way of working, but do it minimally once a month.
- The bearings of the electric motor have permanent grease filling, are hermetically closed and need no lubricating.

- Clean the table from resin with proper solvent e.g. turpentine or kerosene, eventually with another proper medium according to the need.
- Using of a vacuum cleaner is the best for cleaning the machine from dust. Do it regularly once a week.

10 Faults, Remedy

NO defect should arise if you operate the machine in the right way and make suitable maintenance regularly. In case that the saw dust sticks on the mortiser drill or the exhausting hose is filled up - switch off the electric motor before you start any repair, otherwise it could be damaged. Also switch off the electric motor immediately, if the workpiece is getting to be jammed.

A blunt mortising drill can bring about a hang of the electric motor of the machine. If the drill is blunt, the seared blacks start to appear on the cut of the workpiece! Exchange them immediately in such a case ! If the machine embodies increased vibrations, check its placing, fixing, or fixing and balance of tools.

The machine does not work.

Check the electrical installation and connection to the network.

The output of the machine is insufficient.

Too thick chip - You have to work according to the depth of mortise and hardness of the wood.

The electric motor does not have a sufficient output - it is necessary to call a qualified electrician.

The machine vibrates.

The machine was installed on an uneven surface.

11 Spare Parts

Spare parts are supplied and the service provided by Maksiwa. When ordering spare parts or asking for a repair, do not forget to mention the production number and production year, stated at the rating plate of mortiser.

12 Certificate (to technical data)

Above stated values are those of emissions and need not represent the safe working values. Although there exists a correlation between emissions values and levels of exposition, these values cannot be used for a reliable statement whether other precautions are necessary or not. Agents, influencing a real exposure of workers, include other working space attributes, other sources of noise, etc., e.g. the number of machines and other from neighbourhood influencing processes. The most permissible exposition levels can differ according to country in question, too. This information will serve for machine user to a better estimation of risks

13 Electric Diagram

DIAGRAM FOR 230V/50HZ MACHINE

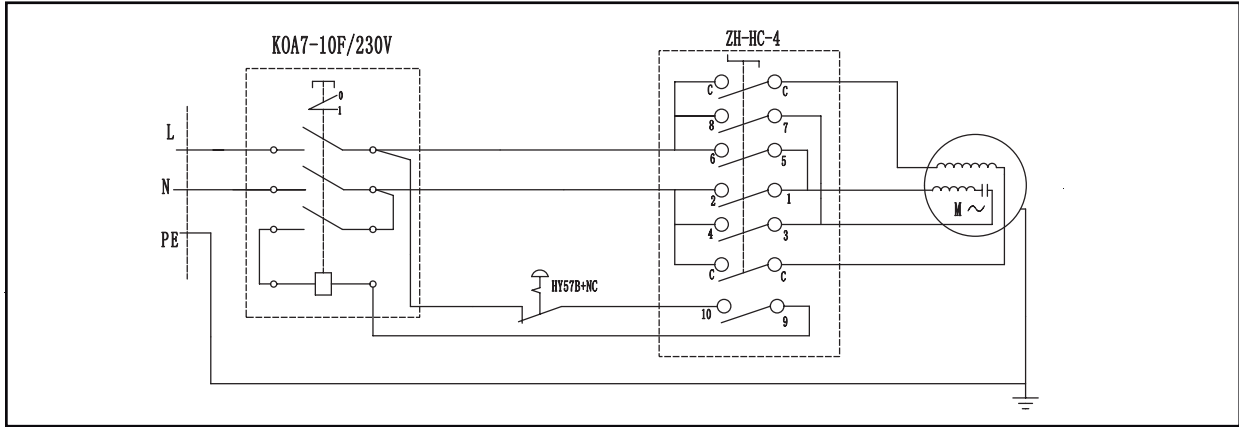


DIAGRAM FOR 380V/50HZ MACHINE

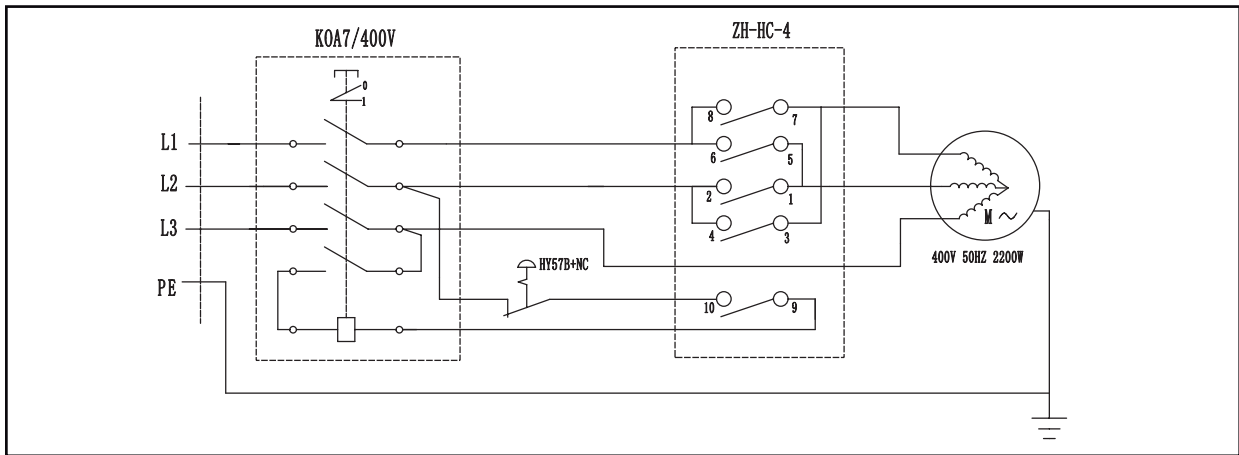
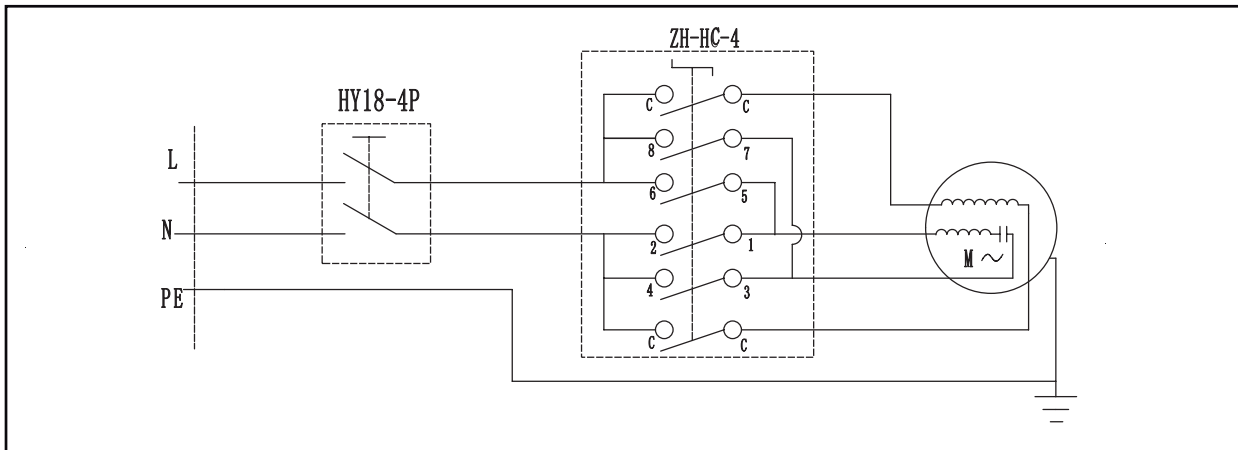
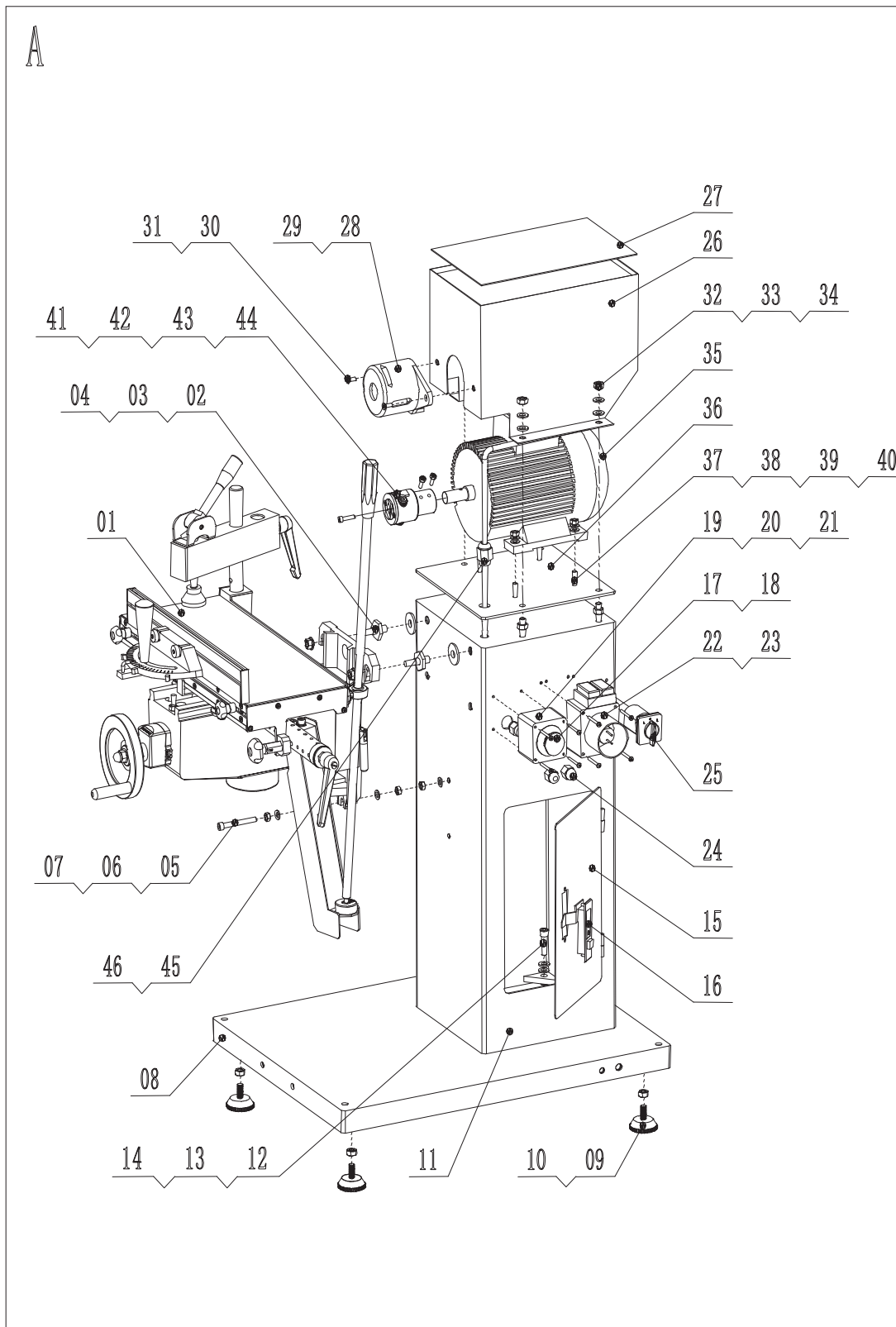


DIAGRAM FOR 60HZ, 1PH MACHINE

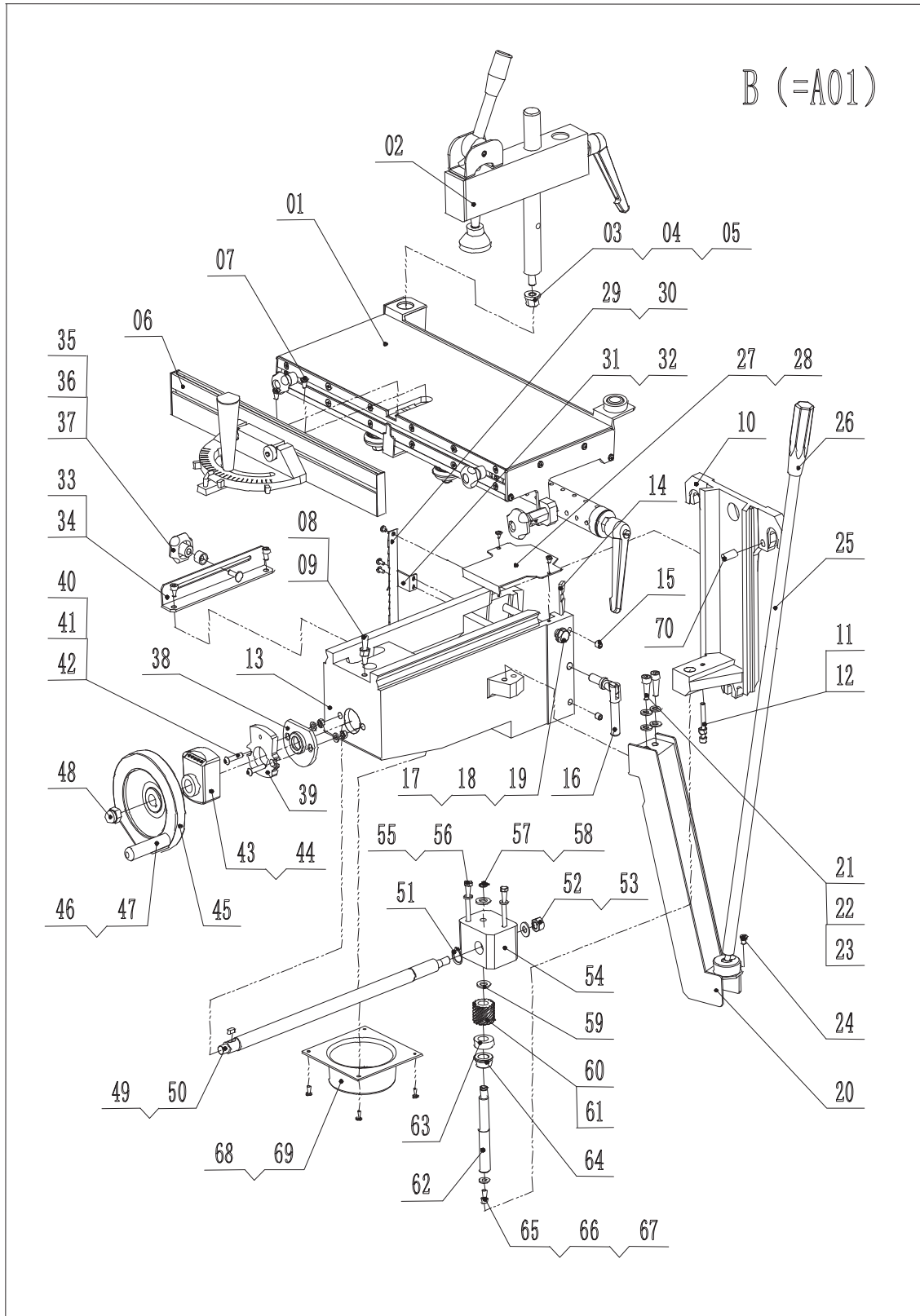


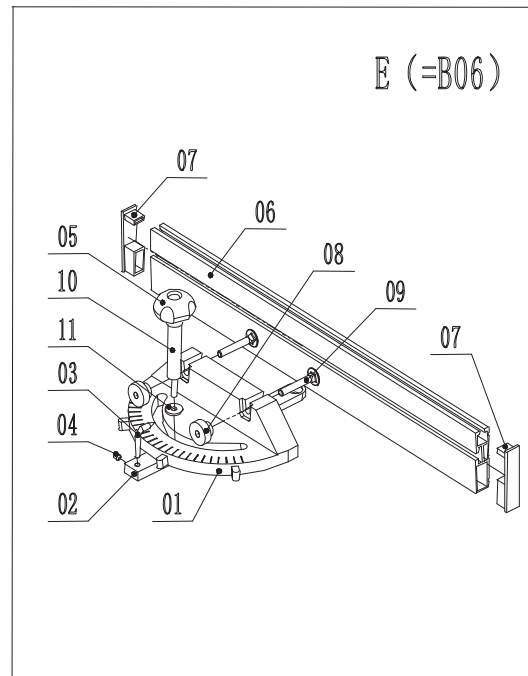
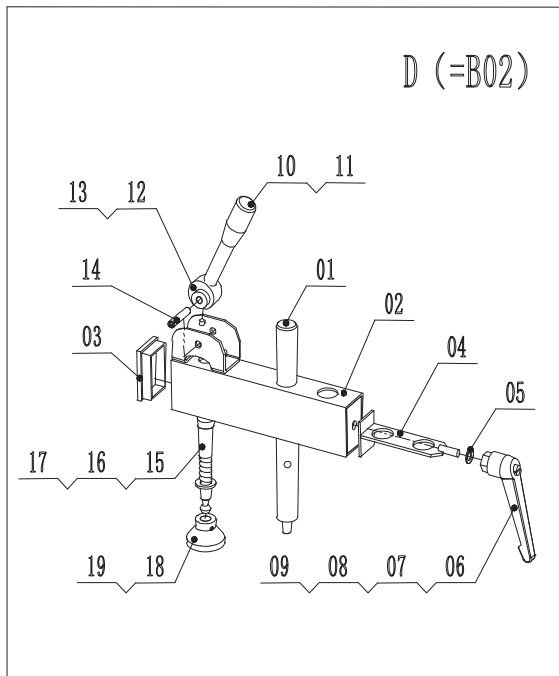
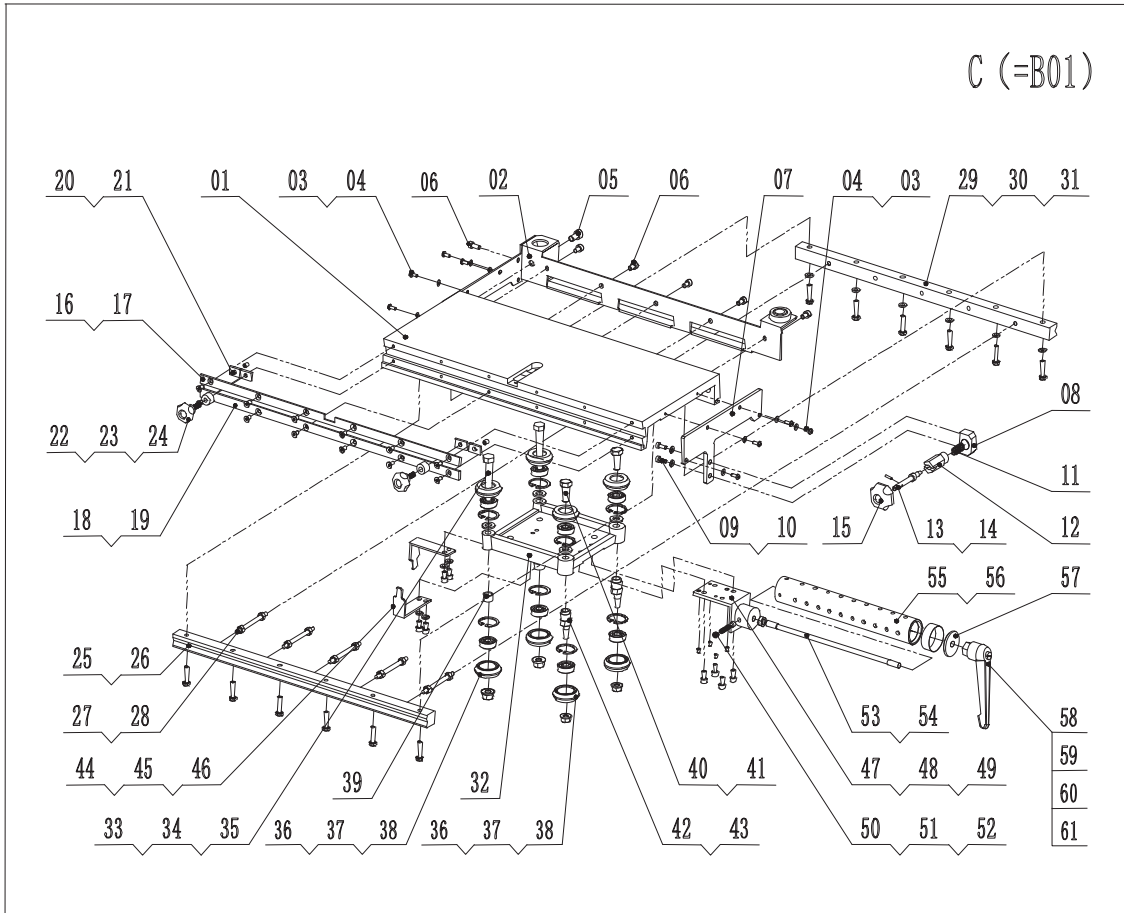
14 Parts List and Exploded Diagram



Parts List - A

NO.	Description	Qty
A01	Mortising Mechanism	1
A02	Hex Nut	2
A03	Double Head Bolt	2
A04	Locking Washer	2
A05	Hex Screw	1
A06	Nut	3
A07	Flat Washer	3
A08	Support Base	1
A09	Foot	4
A10	Nut	4
A11	Square Column Support	1
A12	Hex Bolt	4
A13	Flat Washer	4
A14	Spring Washer	4
A15	Side Door	1
A16	Lock Ms-504	1
A17	Enter Switch	1
A18	Emergency Label	1
A19	Emergency Cover	1
A20	Emergency Box	1
A21	Cross Screw	4
A22	Electromagnetism Switch	1
A23	Cross Screw	4
A24	Stain Relief	2
A25	Rotary Switch ZH-A	1
A26	Motor Protection Cover	1
A27	Rubber Plate	1
A28	Chuck Protection	1
A29	Direction Label	1
A30	Cross Screw	2
A31	Nut	2
A32	Nut	8
A33	Flat Washer	4
A34	Spring Washer	4
A35	Motor	1
A36	Motor Mounting Base	1
A37	Hex Bolt	4
A38	Nut	4
A39	Flat Washer	4
A40	Spring Washer	4
A41	Chuck	1
A42	Hex Screw	2
A43	Hex Screw	1
A44	Stain Relief	1
A45	Power Line	1





Parts List - B

NO.	Description	Qty	NO.	Description	Qty
B01	Working Table	1	B46	Handle Wheel Knob	1
B02	Work Clamp Assembly	1	B47	Nut	1
B03	Flat Washer	1	B48	Cap Nut	1
B04	Spring Washer	1	B49	Gear Shaft	1
B05	Nut	1	B50	Pin	1
B06	Mitre Gauge Assembly	1	B51	C Spring Ring	1
B07	Hex Screw	2	B52	Nut	1
B08	Hex Screw	1	B53	Flat Washer	1
B09	Nut	1	B54	Gear Box	1
B10	Mortiser Base	1	B55	Hex Bolt	2
B11	Hex Screw	1	B56	Spring Washer	2
B12	Nut	1	B57	C Spring Ring	1
B13	Rise & Fall Frame	1	B58	Flat Washer	1
B14	Inset Plate	1	B59	Flat Washer	1
B15	Hex Screw	2	B60	Oblique Gear	1
B16	Locking Handle	1	B61	Spring Pin	1
B17	Hex Bolt	1	B62	Guide Screw	1
B18	Flat Washer	2	B63	Bearing 51102	1
B19	Nut	1	B64	Bush	1
B20	Angle Steel	1	B65	Hex Screw	1
B21	Hex Screw	2	B66	Spring Washer	1
B22	Flat Washer	2	B67	Flat Washer	1
B23	Spring Washer	2	B68	Dust Port	1
B24	Hex Screw	1	B69	Cross Screw	4
B25	Adjusting Bar	1	B70	Hex Bolt	2
B26	Handle	1			
B27	Cover Plate	1			
B28	Cross Screw	2			
B29	Up & Down Scale	1			
B30	Cross Screw	2			
B31	Pointer	1			
B32	Cross Screw	2			
B33	Location Plate	1			
B34	Hex Screw	2			
B35	Location Handle	1			
B36	Location Tube	1			
B37	Half Bolt	1			
B38	Face Plate	1			
B39	Calculator Base Plate	1			
B40	Hex Screw	2			
B41	Nut	2			
B42	Flat Washer	2			
B43	Calculator	1			
B44	Screw	1			
B45	Handle Wheel	1			

Parts List - C

NO.	Description	Qty	NO.	Description	Qty
C01	Working Table	1	C32	Sliding Base	1
C02	Baffle Assembly	1	C33	Locking Axle	2
C03	Cross Screw	8	C34	Washer	2
C04	Flat Washer	8	C35	Nut	2
C05	Hex Screw	1	C36	Idler Wheel	8
C06	Hex Screw	6	C37	Bearing 6000	8
C07	Cover Plate	1	C38	C Ring	8
C08	Pin Base	1	C39	Insulate Tube	2
C09	Hex Screw	2	C40	Hex Bolt	2
C10	Spring Washer	2	C41	Washer	2
C11	Spring	1	C42	Eccentric Rod	2
C12	Pin Tube	1	C43	Nut	2
C13	Locking Pin	1	C44	Location Plate	2
C14	Spring Pin	1	C45	Hex Screw	4
C15	Locking Handle	1	C46	Flat Washer	4
C16	Up-Locking Plate	1	C47	Location Steel	1
C17	Hex Screw	6	C48	Screw	4
C18	Down-Locking Plate	1	C49	Screw	4
C19	Hex Screw	6	C50	Spring	1
C20	Locking Block	2	C51	Stell Ball	1
C21	Screw	2	C52	Screw	1
C22	Adjusting Handle	2	C53	Locking Axle	1
C23	Locking Tube	2	C54	Nut	1
C24	Locking Block	2	C55	Limited Tube	1
C25	Fixed Track	1	C56	Limited Ruller	1
C26	Hex Bolt	6	C57	Cover Plate	1
C27	Double Head Pin	5	C58	Locking Tube	1
C28	Nut	10	C59	Locking Handle	1
C29	Adjusting Track	1	C60	Spring	1
C30	Hex Bolt	6	C61	Screw	1
C31	Flat Washer	6			

Parts List - D

NO.	Description	Qty
D01	Support Bar	1
D02	Horizontal Steel	1
D03	Plastic Cover	1
D04	Locking Plate	1
D05	Washer	1
D06	Locking Tube	1
D07	Locking Handle	1
D08	Spring	1
D09	Screw	1
D10	Locking Bar	1
D11	Locking Handle	1
D12	Eccentric Block	1
D13	Screw	1
D14	Pin	1
D15	Press Axle	1
D16	Spring	1
D17	Flat Washer	1
D18	Press Block	1
D19	Spring Pin	1

Parts List - E

NO.	Description	Qty
E01	Gauge Scale Assembly	1
E02	Locking Block	1
E03	Pointer	1
E04	Screw	1
E05	Handle	1
E06	Mitre Gauge Fence	1
E07	Cover for Mite Gauge	2
E08	Nut	2
E09	Bolt	2
E10	Double Head Screw	1
E11	Washer 6	1

15 Terms of Warranty

MAKSIWA assures the owner that their equipment, identified by the Serial number issued on the Warranty Terms.

The equipment under warranty, for two (2) years, is as followed:

1. The warranty period begins on the date of the Warranty Terms below.
2. Within the warranty period, the manual labor and the components replaced by manufacturing defect will be provided for free if duly proved by Maksiwa Service.
3. Third-party manufacturing equipment that makes up the MAKSIWA equipment (such as motors, electrical equipment, belts etc.) are subject to the terms and conditions of warranty of their respective manufacturers.
4. In case an exchange of machine is needed, please return the defective part or machine to MAKSIWA.
5. All workplace adaptations for the equipment are under the responsibility of the machine owner.
6. If you notice any defect or malfunction when receiving the equipment, get in touch immediately with the manufacturer or Dealer. Do not turn it on.
7. Not included in this warranty is any technical visits aimed at cleaning or adjustments caused by wear, resulting from normal use of the equipment.
8. The warranty does not cover problems caused by mistreatment, carelessness, misuse or inappropriate use of the functions designed for this equipment in this manual, as well as poorly executed operations by untrained operators to operate it.
9. MAKSIWA is not responsible for lost productivity, direct or indirect damages caused to the owner of the equipment or to third parties, or any other expense, including lost profits.
10. This equipment requires the use of a dust collection system with a minimum of 2 hp.
11. Even under warranty, you may lose its validity as follows:
 - a) Application of non-original components;
 - b) Alteration of its original features;
 - c) Lack of proper maintenance;
 - d) Improper use of the equipment;
 - e) Change in equipment or electronic connections;
 - f) Damage caused by mechanical shock or exposure to unsuitable conditions (humidity, salt spray, corrosive agents, etc.);
 - g) Damage caused by bad weather (floods, flooding, lightning, power outages etc.);
 - h) Maksiwa is not responsible for damages to electrical components cause by power variation in your area.
 - i) Removable of safety equipment will void your warranty. (Riving Blade, Blade Cover, etc.).

For your added security, have the repairs, maintenance and adjustments (including inspection and replacement) be perform by a Maksiwa technician, assisted over the phone by a Maksiwa technician or by a Maksiwa recommended third-party, which will always use OEM spare parts and Genuine accessories, reassembling your machine identically to the original.

For your safety, trust the repairs, maintenance and adjustments (including inspection and replacement) for technical assistance recommended by MAKSIWA, always use genuine spare parts and accessories, reassembling to its original machine the same way.

MODEL:

SERIAL NUMBER:

DATE:

LOT NUMBER:

Imported by:

Maksiwa International Inc.

990 S Rogers Circle, suite 11

Boca Raton, Florida

ZIP Code: 33487

Call us free: +1 (844) 319-6594

E-mail: tech@maksiwa.com

www.maksiwa.com